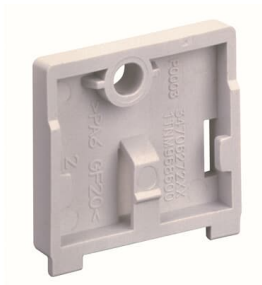




PRODUCT-DETAILS

TA566

Screw mounting accessory. For S500-eCo I/O modules. 100 pieces (TA566)



General Information	
Extended Product Type	TA566
Product ID	1TNE968901R3107
ABB Type Designation	TA566
EAN	6943747170350
Catalog Description	Screw mounting accessory. For S500-eCo I/O modules. 100 pieces (TA566)
Long Description	TA566: S500-eCo Screw mounting accessory. For S500-eCo I/O modules. 100 pieces.

Ordering	
CN8	85389099
Invoice Description	Screw mounting accessory. For S500-eCo I/O modules. 100 pieces (TA566)
Made To Order	No
Minimum Order Quantity	1 case
Order Multiple	1 case
Selling Unit of Measure	case

Dimensions	
Product Net Weight	0.3 kg
Product Net Depth / Length	10 mm
Product Net Height	10 mm
Product Net Width	10 mm
Gross Weight	0.332 kg

Technical	
Function	For S500-eCo I/O modules. 100 pieces
Degree of Protection	IP20
Accessory Type	Mechanical: Other
Ambient Air Temperature	Operation 0 ... +60 °C Storage -40 ... +70 °C

Additional Information	
Product Main Type	TA566
Product Name	Distributed Automation PLCs

External Classifications and Standards	
eClass	27-24-22-92
ETIM 8	EC002584 - Accessories/spare parts for controls
ETIM 9	EC002584 - Accessories/spare parts for controls
ETIM 10	EC002584 - Accessories/spare parts for controls
UNSPSC	32151703

Environmental	
WEEE B2C / B2B	Business To Business
WEEE Category	5. Small Equipment (No External Dimension More Than 50 cm)

Categories	
PLC Automation → Programmable Logic Controllers PLCs → AC500-eCo → Accessories	

