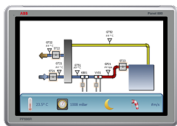




PRODUCT-DETAILS

3BSE092985R1

PP886R Rugged Panel 15"



General Information	
Product ID	3BSE092985R1
ABB Type Designation	PP886R
Catalog Description	PP886R Rugged Panel 15"
Long Description	1280x800 widescreen (16:10). Requires Panel Builder 800 Version 6.2 for configuration. To protect the front, it's recommended to use the RX886 Touch cover. Replaces PP885R. One ethernet port.
Additional Information	
Medium Description	1280x800 widescreen (16:10). Requires Panel Builder 800 Version 6.2 for configuration. To protect the front, it's recommended to use the RX886 Touch cover. Replaces PP885R. One ethernet port.
Product Type	Control_System_Accessory

Ordering	
HS Code	853710 -- ELECTRICAL MACHINERY AND EQUIPMENT AND PARTS THEREOF; SOUND RECORDERS AND REPRODUCERS, TELEVISION IMAGE

AND SOUND RECORDERS AND REPRODUCERS, AND PARTS AND ACCESSORIES OF SUCH ARTICLES;Boards, panels, consoles, desks, cabinets and other bases, equipped with two or more apparatus of heading 8535 or 8536, for electric control or the distribution of electricity, including those incorporating instruments or apparatus of Chapter 90, and numerical control apparatus, other than switching apparatus of heading 8517;For a voltage not exceeding 1 000 V	
Customs Tariff Number	85371010

Dimensions	
Product Net Depth / Length	73 mm
Product Net Height	286 mm
Product Net Width	410 mm
Product Net Weight	4.1 kg

Environmental	
RoHS Status	Following EU Directive 2011/65/EU
WEEE Category	2. Screens, Monitors, and Equipment Containing Screens Having a Surface Greater Than 100 cm²
Number of Batteries	1
Battery Chemical Composition	Lithium
Battery Type	Button Cell
Battery Weight	3.2 g
Screen Size	15.4 in
SCIP	No SVHC present Taiwan (Chinese Taipei)

Categories	
Control System Products → Panel HMI → Panel 800 → Panel 800 - Operator Panels → PP886R Rugged Panels → PP886R Rugged Panel 15"	
Control Systems → 800xA → Operations → Panel 800	
Control Systems → Compact Product Suite → Operations → Panel 800	
Control Systems → Freelance → Operations → Panel 800	

